



Color Bars Quilt

Featuring Hand Crafted Cottons by Jane Sassaman

Simple lines and beautiful rich colors make a stunning modern quilt!

Collection: Hand Crafted Cottons by Jane Sassaman

Technique: Piecing, Quilting

Skill Level: Beginner

Finished Size: 56" x 57"
(142.24cm x 144.78cm)
Finished Block: 6" x 6"
(15.24cm x 15.24cm)

All possible care has been taken to assure the accuracy of this pattern. We are not responsible for printing errors or the manner in which individual work varies. Please read the instructions carefully before starting this project. If kitting, it is recommended a sample is made to confirm accuracy.

Project designed by Jane Sassaman | Tech edited by Alison M. Schmidt

Fabric Requirements

DESIGN	COLOR	ITEM ID	YARDAGE
(A) Hand Crafted Cottons	Lobelia	HCJS001.LOBELIA	¼ yard (0.23m)
(B) Hand Crafted Cottons	Dandelion	HCJS001.DANDELION	¼ yard (0.23m)
(C) Hand Crafted Cottons	Monarch	HCJS001.MONARCH	¼ yard (0.23m)
(D) Hand Crafted Cottons	Peony	HCJS001.PEONY	¼ yard (0.23m)
(E) Hand Crafted Cottons	Khaki	HCJS001.KHAKI	¼ yard (0.23m)
(F) Hand Crafted Cottons	Charcoal	HCJS001.CHARCOAL	¼ yard (0.23m)
(G) Hand Crafted Cottons	Violet	HCJS001.VIOLET	¼ yard (0.23m)
(H) Hand Crafted Cottons	Wasabi	HCJS001.WASABI	¼ yard (0.23m)
(I) Hand Crafted Cottons	Tomato	HCJS001.TOMATO	¼ yard (0.23m)
(J) Hand Crafted Cottons	Pansy	HCJS001.PANSY	¼ yard (0.23m)
(K) Hand Crafted Cottons	Peridot	HCJS001.PERIDOT	¼ yard (0.23m)
(L) Hand Crafted Cottons	Adonis	HCJS001.ADONIS	¼ yard (0.23m)
(M) Hand Crafted Cottons	Kelly	HCJS001.KELLY	¼ yard (0.23m)
(N) Hand Crafted Cottons	Lapis	HCJS001.LAPIS	¼ yard (0.23m)
(O) Hand Crafted Cottons	Cancun	HCJS001.CANCUN	¼ yard (0.23m)
(P) Hand Crafted Cottons	Jet	HCJS001.JET*	1½ yard (1.37m)

* includes binding

Backing (Purchased Separately)

44" (7.43m) wide

Hand Crafted Cottons

OR

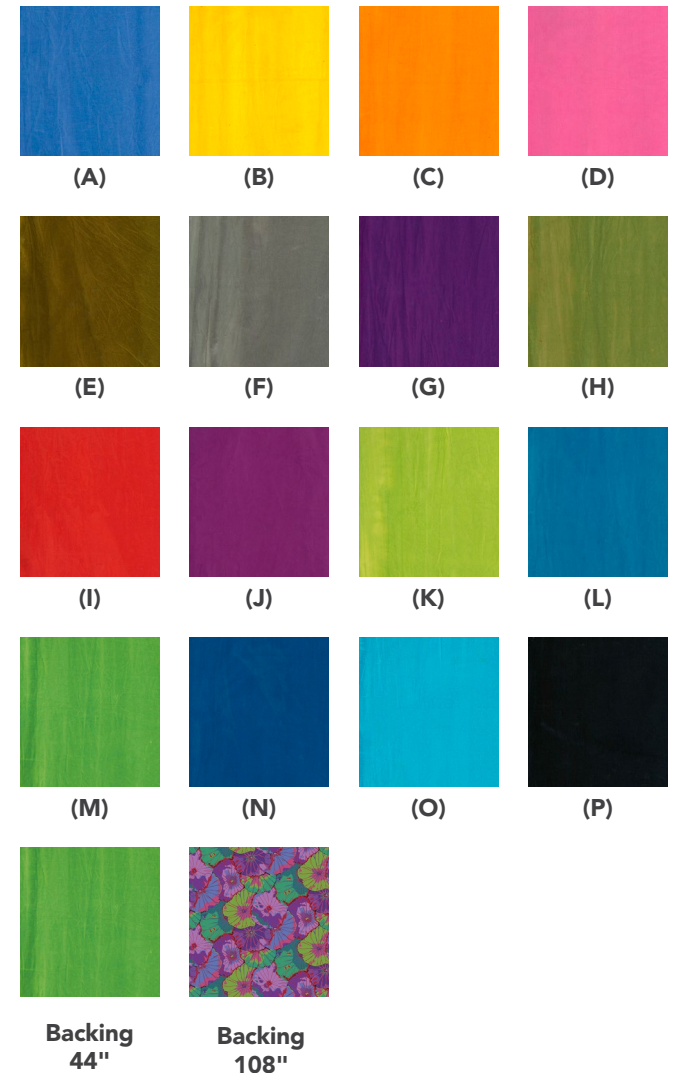
108" (2.51m) wide

Lotus Leaf

Kelly	HCJS001.KELLY	3¾ yards (3.43m)
Purple	QBG007.PURPLE	2 yards (1.83m)

Additional Recommendations

- 100% cotton thread in colors to match
- 64" x 65" (163cm x 165cm) batting

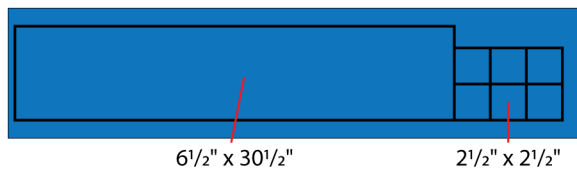


Cutting:

WOF = Width of Fabric

To cut all the listed pieces from the one strip, cut the largest piece first then divide the remaining strip into 2½"- wide strips to cut the small squares.

Cutting Diagram



Fabrics A and B, cut from each:

- (1) 6½" x WOF; sub-cut
- (1) 6½" x 30½" rectangle and (6) 2½" squares

Fabrics C, D and E, cut from each:

- (1) 6½" x WOF; sub-cut
- (1) 6½" x 30½" rectangle and (5) 2½" squares

Fabrics F, G and H, cut from each:

- (1) 6½" x WOF; sub-cut
- (1) 6½" x 30½" rectangle and (4) 2½" squares

Fabrics I and J, cut from each:

- (1) 6½" x WOF; sub-cut
- (1) 6½" x 13½" rectangle and (5) 2½" squares

Fabrics K, L, M and N, cut from each:

- (1) 6½" x WOF; sub-cut
- (1) 6½" x 13½" rectangle and (4) 2½" squares

Fabric O, cut:

- (1) 6½" x WOF; sub-cut
- (1) 6½" x 13½" rectangle and (3) 2½" squares

Fabric P, cut:

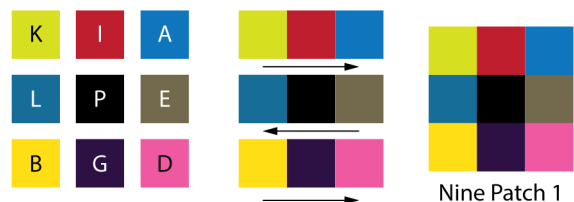
- (1) 6½" x WOF; sub-cut
- (1) 6½" x 13½" rectangle and (4) 2½" squares
- (6) 4½" x WOF for Borders
- (7) 2½" x WOF for Binding

Instructions

All seam allowances are ¼" and pieces are sewn right sides together. Press seam allowances following the arrows in the diagrams.

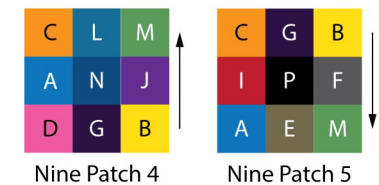
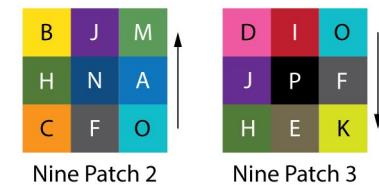
1. Lay out (1) 2½" square of **Fabrics A, B, D, E, G, I, K, L and P**, in three rows of three squares as shown. (**Fig. 1**) Sew the squares into rows. Sew the rows together to complete Nine Patch 1 (6½" square).

Fig. 1



2. Repeat the process in step 1 to make Nine Patch 2 through 8 in the fabric combinations shown in **Fig. 2**.

Fig. 2



Quilt Top Assembly

Note: Follow the **Quilt Layout** diagram on page 5 for placement while assembling the quilt top. Measure the quilt center before cutting border pieces and adjust measurements given if necessary.

3. Sew the (8) $6\frac{1}{2}$ " x $30\frac{1}{2}$ " rectangles together, along the long edges, in the order: **Fabric F, C, G, H, A, B, D** and **E**, to make Row 1 ($30\frac{1}{2}$ " x $48\frac{1}{2}$ ").
4. Sew the (8) Nine Patch blocks together in numerical order, to make Row 2 ($6\frac{1}{2}$ " x $48\frac{1}{2}$ ").
5. Sew the (8) $6\frac{1}{2}$ " x $13\frac{1}{2}$ " rectangles together, along the long edges, in the order: **Fabric O, P, I, N, K, J, M** and **L**, to make Row 3 ($13\frac{1}{2}$ " x $48\frac{1}{2}$ ").
6. Sew the Rows together to complete the Quilt Center ($48\frac{1}{2}$ " x $49\frac{1}{2}$ "). Press seam allowances away from Row 2.
7. Sew together (3) $4\frac{1}{2}$ " **Fabric P** Border strips, end to end into a long strip. Cut (2) $4\frac{1}{2}$ " x $48\frac{1}{2}$ " border strips. Sew to the top and bottom edges of the Quilt Center ($48\frac{1}{2}$ " x $57\frac{1}{2}$ "). Press seam allowances towards the borders.
8. Sew together (3) $4\frac{1}{2}$ " **Fabric P** Border strips, end to end. Cut (2) $4\frac{1}{2}$ " x $57\frac{1}{2}$ " border strips. Sew to the side edges of the Quilt Center to complete the Quilt Top ($56\frac{1}{2}$ " x $57\frac{1}{2}$ "). Press seam allowances towards the borders.

Finishing

9. Sew together the $2\frac{1}{2}$ " **Fabric P** binding strips end to end using diagonal seams. Press seams open. Press the binding strip in half wrong sides together.
10. Layer backing (wrong side up), batting, and quilt top (right side up). Baste the layers together and quilt as desired. Trim excess batting and backing even with the top after quilting is completed.
11. Leaving an 8" tail of binding, sew the binding to the top of the quilt through all layers matching all raw edges. Miter corners. Stop approximately 12" from where you started. Lay both loose ends of binding flat along quilt edge. Where the loose ends meet, fold them back on themselves and press to form a crease. Using this crease as your stitching line, sew the two open ends of the binding right sides together. Trim seam to $\frac{1}{4}$ " and press open. Finish sewing binding to quilt.
12. Turn the binding to the back of quilt and hand-stitch in place.

Quilt Layout

