



NORTHCOTT
Cottons that feel like silk



Medium: 14" L x 12" W x 5" D
Shown in 23475-91

Large: 20" L x 14" W x 6" D
Shown in 23473-91

Small: 12" L x 10" W x 3" D
Shown in 23476-91

GIFT BAGS

FREE PATTERN • By Northcott Studio

Northcott Canada
101 Courtland Avenue
Vaughan, Ontario L4K 3T5

Northcott USA
1050 Valley Brook Ave
Lyndhurst, NJ 07071

www.northcott.com

GIFT BAGS

Finished Size (approximate):

Large: 20" H x 14" W x 6" D

Medium: 14" H x 12" W x 5" D

Small: 12" H x 10" W x 3" D

WOF = width of fabric

Fabric Requirements	Yardage	Cutting Instructions
Large – 23473-91 (Poinsettia & Cardinal Wreaths)	1 1/8 yds	<ul style="list-style-type: none"> Cut two pieces that measure 20" (WOF) x 36"
Medium – 23475-91 (Poinsettia Toss)	7/8 yd	<ul style="list-style-type: none"> Cut two pieces that measure 17" (WOF) x 27"
Small – 23476-91 (Holly Toss)	5/8 yd	<ul style="list-style-type: none"> Cut two pieces that measure 13" (WOF) x 20"
1/4" Cording for Drawstring (Narrower cording or ribbon can be used for the small bag.)	<p>Large – 2 pieces approx. 40" each</p> <p>Medium – 2 pieces approx. 36" each</p> <p>Small – 2 pieces approx. 32" each</p>	

Assembly:

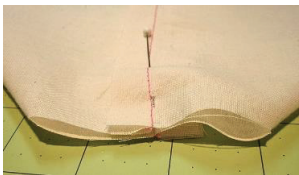
- To prepare the bottom corners, layer the two bag pieces right sides together and pin in place. Referring to the chart below for the appropriate size, draw a square on the bottom two corners (on the wrong side of fabric). Using scissors, cut out the corners.

Large – 3 1/2" square

Medium – 3" square

Small – 2" square

- With right sides together, sew 1/4" seams along both sides and across the bottom. Finish the edges off with an overcast stitch or serger.
- To make the bottom corners, carefully match the side seam of one corner with the bottom seam from the same corner. Pin in place. The seam allowances should be facing in opposite directions. Stitch across and finish the raw edges with an overcast stitch or serger.



- Turn bag right side out.
- To make the drawstring opening, turn the top edge of the bag under (to the inside) 1/4" and press (Fold A). Bring this top edge down inside the bag (wrong sides together). For the large bag, fold in about 9 inches; for the medium bag, fold in about 7 inches; and for the small bag, fold in about 5 inches. Pin Fold A in place and stitch around bag 1/8" from the edge of Fold A. Sew a second line about 1" away from the first line of stitching (towards the top of the bag) to get a channel in which you can thread the cording through. You will be stitching through TWO layers of fabric.
- Using a seam ripper, gently open up the side seam on the outside of the bag between the two lines of stitching. Repeat this step for both sides of the bag. Take one piece of cording and thread it through the channel so it comes out the same side as you inserted it. Tie the ends in a knot. Repeat on the opposite side of the bag so you have a tie on both sides. Pull on both knotted ends of cording to close the bag.