

Free Spirit

Patchwork Quilt

Featuring *Madison One* by William Reue

Architecture-inspired prints give unexpected structure to this simple quilt. Squares, cut on-point from directional prints, add an easy-peasy secondary design line without extra seams.

Collection:	Madison One by William Reue
Technique:	Bias Cutting, Piecing
Finished Size:	64" x 76" (1.62m x 1.93m)

All possible care has been taken to assure the accuracy of this pattern. We are not responsible for printing errors or the manner in which individual work varies. Please read the instructions carefully before starting this project. If kitting, it is recommended a sample is made to confirm accuracy.

Project designed by William Reue | Tech edited by Alison M. Schmidt

Fabric Requirements

DESIGN	COLOR	ITEM ID	YARDAGE
(A) Matchbook	Multi	PWWR001.MULTI	5/8 yard (0.57m)
(B) Intersection	Blue	PWWR002.BLUE	1/2 yard (0.46m)
(C) Diagonal Payette	Red	PWWR003.RED	1/2 yard (0.46m)
(D) Payette	Blue	PWWR004.BLUE	1/2 yard (0.46m)
(E) Traffic	Blue	PWWR005.BLUE	1/2 yard (0.46m)
(F) Change of Season	Multi	PWWR006.MULTI	5/8 yard (0.57m)
(G) Rectrix Large	Blue	PWWR007.BLUE	1/2 yard (0.46m)
(H) Rectrix	Red	PWWR008.RED	1/2 yard (0.46m)
(I) Rectrix Small	Light	PWWR009.LIGHT	3/8 yard (0.34m)
(J) One Way	Blue	PWWR010.BLUE	1/2 yard (0.46m)
(K) My Plus One	Purple	PWWR011.PURPLE	1/2 yard (0.46m)
(L) My Plus One Small	Red	PWWR012.RED	1/2 yard (0.46m)
(M) Basket Case	Yellow	PWWR013.YELLOW	1/2 yard (0.46m)
(N) Strata	Gaya	PWWR014.GAYA	1/2 yard (0.46m)
(O) Strata Small	Peridot	PWWR015.PERIDOT	1/2 yard (0.46m)
(P) Designer Essential Solids	Navy	CSFSESS.NAVY*	1 1/4 yards (1.14m)

* includes binding

Backing (Purchased Separately)

44" (7.43m) wide

One Way Blue PWWR010.BLUE 4 7/8 yards (4.46m)

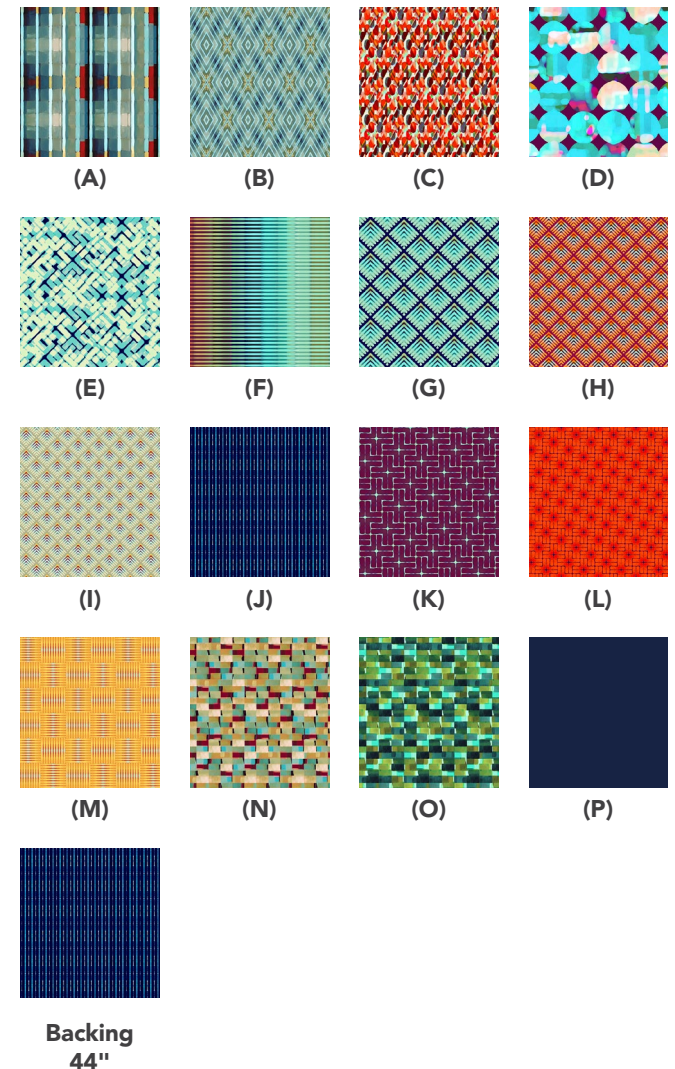
OR

108" (2.51m) wide 2 1/8 yards (1.94m)

Additional Recommendations

- 100% Cotton Thread
- 72" x 84" (1.83m x 2.13m) batting

Optional: spray starch/starch alternative and a 6 1/2" square rotary cutting ruler (this makes it easier to cut some squares on the bias grain of the fabric)



Cutting

Most pieces for this quilt are cut on the straight of grain - parallel to the selvedge edges. For the bias (45° angle) cuts for **Fabrics A, M, and O**, press first with starch or starch alternative before cutting to stabilize fabrics and handle gently to keep bias edges from stretching.

Fabric A, cut:

(10) 6½" squares on point – use a 6½" square rotary cutting ruler if you have one, placed at a 45° angle to the straight grain of the fabric, so that two corners of the square are parallel to the light colored vertical stripes in the print.

Fabrics B, C, D, and H, cut:

(2) 6½" x WOF; sub-cut
(8) 6½" squares

Fabric E, cut:

(2) 6½" x WOF; sub-cut
(10) 6½" squares

Fabric F, cut:

(3) 6½" x WOF; sub-cut
(13) 6½" squares

Fabrics G, J, K, and N, cut:

(2) 6½" x WOF; sub-cut
(7) 6½" squares

Fabric I, cut:

(1) 6½" x WOF; sub-cut
(6) 6½" squares

Fabric L, cut:

(2) 6½" x WOF; sub-cut
(9) 6½" squares

Fabric M, cut:

(5) 6½" squares on point, and
(1) 6½" square, on the straight grain of the fabric

Fabric O, cut:

(6) 6½" squares on point

Fabric P, cut:

(8) 2½" x WOF for border
(8) 2½" x WOF for binding

Quilt Top Assembly

1. Referring to the **Quilt Layout Diagram** on page 4, arrange the squares in (12) rows of (10) squares each. Note that the **Fabric A** and **Fabric O** squares, cut on point, should be oriented so that the strong diagonal print runs from upper left to lower right. Place other prints as desired.
2. Join the squares in each row together along adjacent edges. Press the seam allowances in one direction in each row, alternating direction from row to row.
3. Join the rows together along adjacent edges, matching seam allowances. Press all the seam allowances in the same direction.
4. Join (2) **Fabric P** border strips end-to-end, using a diagonal seam. Press seam allowances open. Repeat to make (4) sets of joined outer borders.

5. Measure the quilt center horizontally through the middle and trim 2 border strips to fit (72½" long). Sew to the left and right sides of the quilt top. Press towards **Fabric P**.
6. Repeat step 5, measuring vertically, to trim the remaining borders to fit (64½"-long) sew to the top/bottom, and press.

Finishing

7. Sew together the remaining 2½" x WOF **Fabric P** binding strips end-to-end using diagonal seams. Press the seams open. Press the binding strip in half wrong sides together.
8. Layer the backing (wrong side up), batting, and quilt top (right side up). Baste the layers together and quilt as desired. Trim excess batting and backing even with the quilt top after quilting is completed.
9. Leaving an 8" (20.32cm) tail of binding, sew binding to top of quilt through all layers matching all raw edges. Miter corners. Stop approximately 12" (30.48cm) from where you started. Lay both loose ends of binding flat along quilt edge. Where these two loose ends meet, fold them back on themselves and press to form a crease. Using this crease as your stitching line, sew the two open ends of the binding together right sides together. Trim seam to ¼" (.64cm) and press open. Finish sewing binding to quilt.
10. Turn the binding to the back of the quilt and hand stitch in place.

Quilt Layout

