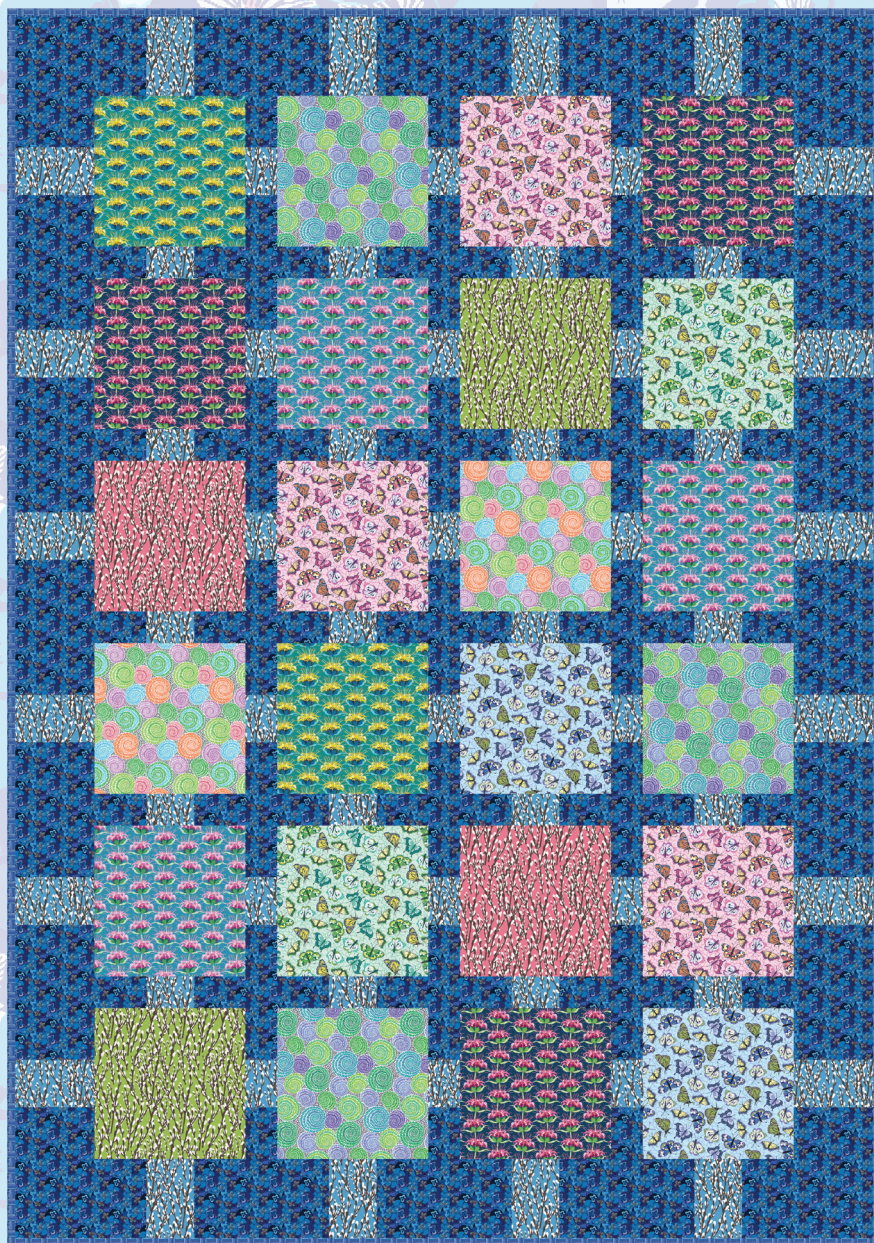


free pattern

# Village Square



- DESIGNED BY MODERN QUILT STUDIO
- FINISHED SIZE: 54" x 77"
- PATTERN AVAILABLE IN FEB 2020 AT BENARTEX.COM

under  
the sun

by Modern Quilt Studio

# Village Square

54" x 77" napping quilt

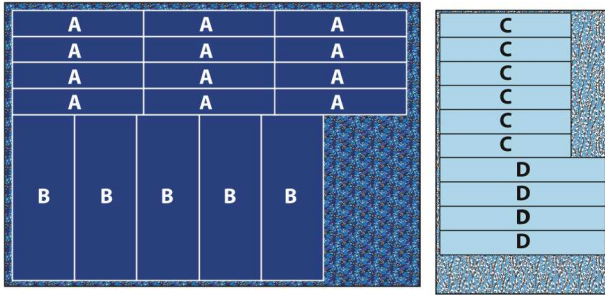
## MATERIALS

- 1 3/4 yards Midnight Pansy background (6934-11)
  - 3/4 yard Lake Pussy Willow connectors (6935-54)
  - 24—10" x 10" squares 3 each 6930-27, 6931-25, 6931-28, 6933-55; 2 each 6930-04, 6930-05, 6931-31, 6933-99, 6935-01, 6935-42
  - 3/4 yard Bluebell Lawn Chair for binding (6932-50)
  - 3 1/2 yards Grass green Lawn Chair for backing (6932-40)
  - 58" x 81" batting
- Yardages are based on 42" of usable fabric width.  
Cutting sizes include 1/4" seam allowances.

## CUTTING

Cutting directions are for making strip sets. If you wish to enlarge the quilt or cut individual pieces rather than use strip sets, those cut sizes are listed at the end.

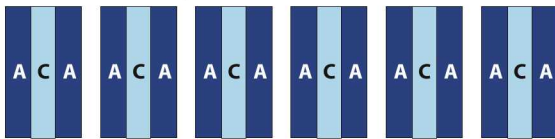
- From Midnight Pansy, cut as shown:
  - 12—3 3/4" x 19 1/2" **A** pieces
  - 5—9" x 24 1/2" **B** pieces
- From Lake Pussy Willow, cut as shown:
  - 6—3 1/2" x 19 1/2" **C** pieces
  - 4—3 1/2" x 24 1/2" **D** pieces



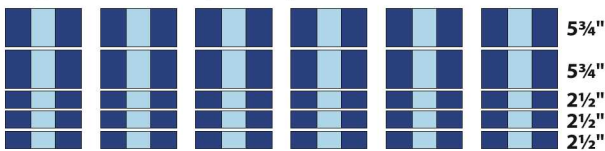
## ASSEMBLY

We recommend pressing all seams open for a flat, crisp look.

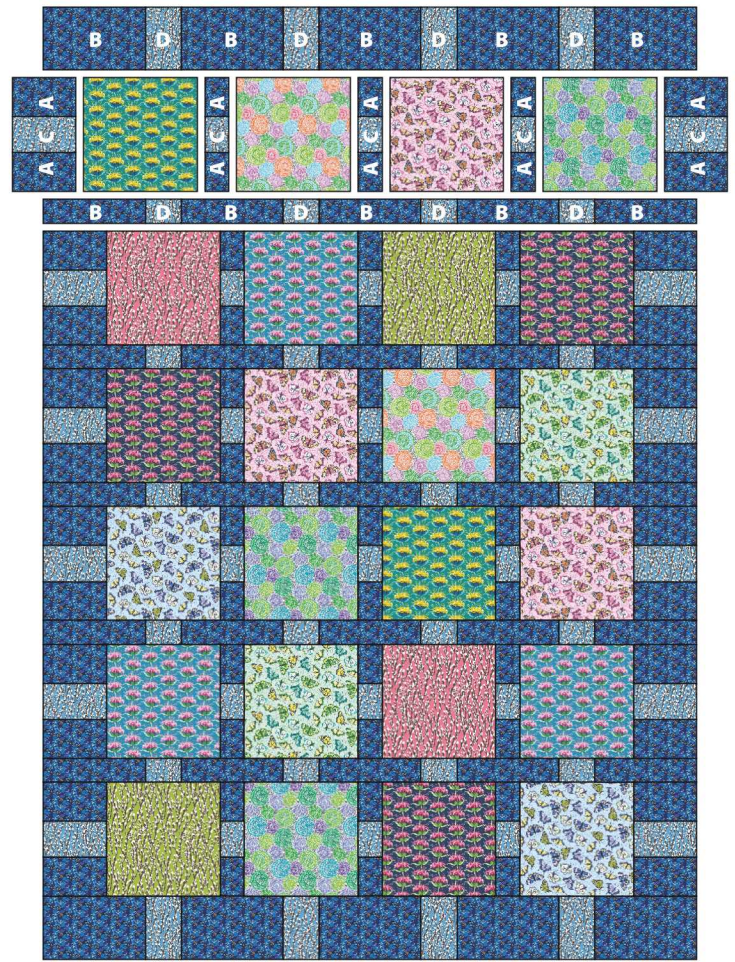
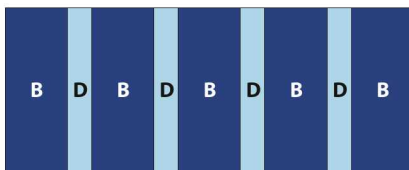
- Sew 6—**ACA** strip sets.



- Cut each **ACA** strip set into 2—5 3/4" high units and 3—2 1/2" high units. Note that the **ACA** strip sets are 1/2" longer for trimming the tops/bottoms flush if needed.

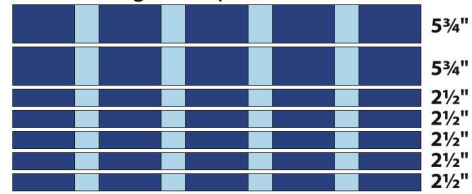


- Sew 1—**BDBDBDBDB** strip set



assembly diagram

- Cut the **BDBDBDBDB** strip set into 2—5 3/4" high strips and 5—2 1/2" high strips. The **BDBDBDBDB** strip set is 1/2" longer for trimming the tops/bottoms flush if needed.



- Following assembly diagram, piece **ACA** units and 10" x 10" squares in rows.
- Sew rows together, centering **D** pieces of the **BDBDBDBDB** strips on centers of 10" x 10" squares.

## FINISHING

- Layer pieced top, batting and backing.
- Baste, then quilt. We quilted a freeform wave pattern.
- Finish with your preferred binding method.

Want to cut additional pieces to make the quilt larger? The dimensions of the **cut** sizes are:

- A1**—5 3/4" x 3 3/4"
- A2**—2 1/2" x 3 3/4"
- B1**—9" x 5 3/4"
- B2**—9" x 2 1/2"
- C1**—5 3/4" x 3 1/2"
- C2**—2 1/2" x 3 1/2"
- D1**—3 1/2" x 5 3/4"
- D2**—3 1/2" x 2 1/2"

